

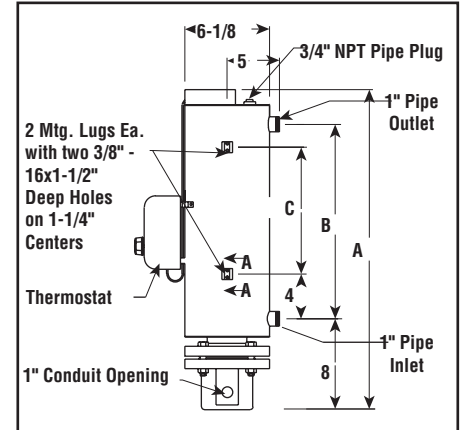
GCHI & GCHIB

Steam, Air & Gas
Applications to 750°F¹

- 3 - 18" ANSI Blind Flange Design
- 3 - 18" Carbon Steel Pipe Body, 150 Lb Construction (750°F Max. Vessel and 1600°F Max. Sheath Temp.)¹ For Stainless Steel Pipe Body Construction, Refer to GCHIS Series Circulation Heaters.
- 3 - 350kW
- 240 and 480V, 1 & 3 Phase
- General Purpose, Moisture Resistant Terminal, Moisture Resistant/Explosion Proof Enclosure
- 0.475" Dia. INCOLOY® Sheath Elements (15 - 23 W/in²)
- 3 and 5" with Side Mounted Thermostat (200 - 550°F), 8, 10, 14 and 16" without Thermostat
- CSA and Other Third Party Approval, Listing or Certification Available



Dimensions (Inches)
GCHI-03



STEAM, AIR AND GAS

Applications

Steam, Air and Gas — Higher kW ratings for larger industrial and commercial gas heating applications.

Features

Terminal Enclosure — E1 General Purpose is standard. E2 Moisture Resistant/Explosion Proof or E4 Moisture Resistant available.

Elements — 0.475" diameter INCOLOY® sheath elements.

Flange — 3 - 10" ANSI B-16.5 flange with 1/2" thermowell for thermostat bulb and a 1/8" NPT threaded opening for a thermocouple or RTD.

Vessel — Pipe body and nozzles are ASTM A53B carbon steel pipe. The end disk is ASTM A516 Grade 70 carbon steel plate. Provided with thermal insulation and painted sheet metal jacket.

Baffle Assembly — Internal baffle assemblies are provided on GCHIB-18 models. Baffles reduce the internal cross sectional area thereby increasing the velocity of the gas. Increasing the gas velocity reduces the operating temperature of the elements and the shell of the vessel.

Wiring — Convenient field wiring terminals are provided for easy installation.

Controls — Series 03 and 06 stock and assembly stock heaters come equipped with side mounted thermostat. Series 18, 27, 45 and 108 are furnished without thermostat.

Specifications and Ordering Information

kW	Volts	Ckt & Phase	Dimensions (In.)			Model	Stock	PCN	Wt. (Lbs.)
			A	B	C				
Series 03 — 3 inch, 150 lb carbon steel vessel — 3 INCOLOY® elements¹ (23 W/in²) with thermostat									
3	240	1-1	32-15/16	22-1/2	16-1/2	GCHI-03-003P-E1	NS	013240	62
3	240	1-3	32-15/16	22-1/2	16-1/2	GCHI-03-003P-E1	S	103915	62
3	480	1-1	32-15/16	22-1/2	16-1/2	GCHI-03-003P-E1	NS	013258	62
3	480	1-3	32-15/16	22-1/2	16-1/2	GCHI-03-003P-E1	S	103958	62
4.5	240	1-1	42-15/16	32-1/2	26-1/2	GCHI-03-04P5-E1	NS	013266	72
4.5	240	1-3	42-15/16	32-1/2	26-1/2	GCHI-03-04P5-E1	NS	104070	72
4.5	480	1-1	42-15/16	32-1/2	26-1/2	GCHI-03-04P5-E1	NS	013274	72
4.5	480	1-3	42-15/16	32-1/2	26-1/2	GCHI-03-04P5-E1	S	104117	72
6	240	1-1	55-7/16	45	39	GCHI-03-006P-E1	NS	013282	94
6	240	1-3	55-7/16	45	39	GCHI-03-006P-E1	S	104230	94
6	480	1-1	55-7/16	45	39	GCHI-03-006P-E1	NS	013290	94
6	480	1-3	55-7/16	45	39	GCHI-03-006P-E1	S	104272	94

Stock Status: S = stock NS = non-stock
To Order—Specify model, volts, phase, kW, PCN and quantity.

1. Outlet gas temperature must be kept below both maximum sheath and vessel temperature or element and heater damage may occur. Contact your Local Chromalox Sales office for application assistance.